

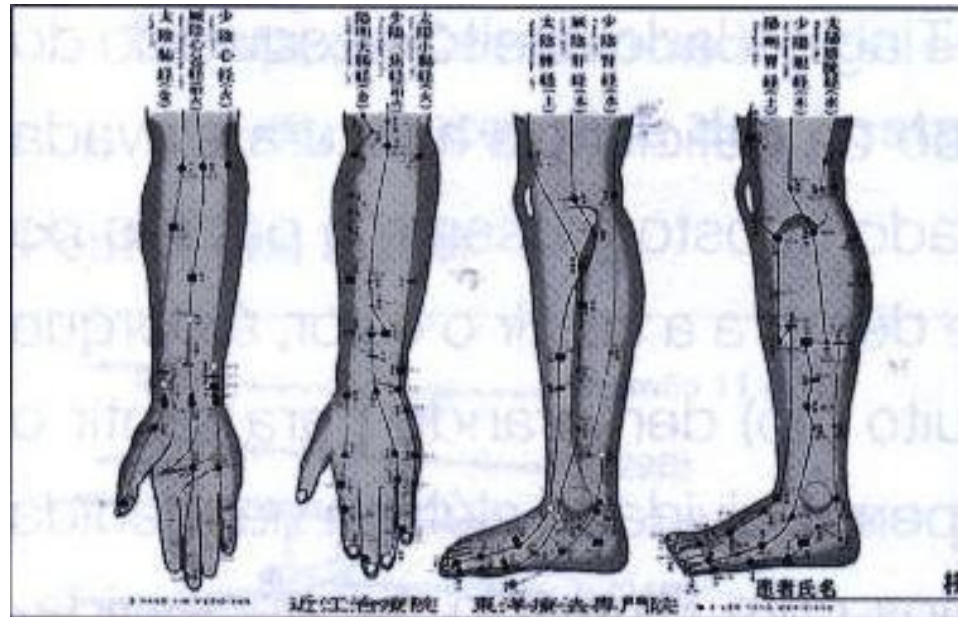
# AKABANE



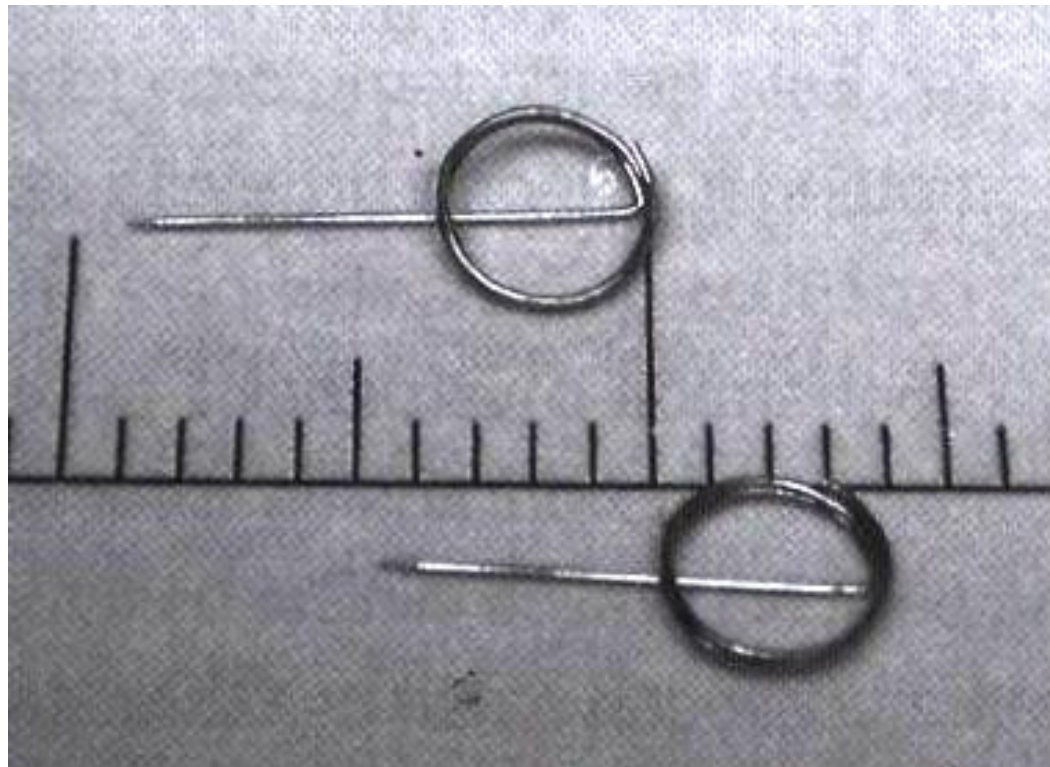
# Lobei Akabane



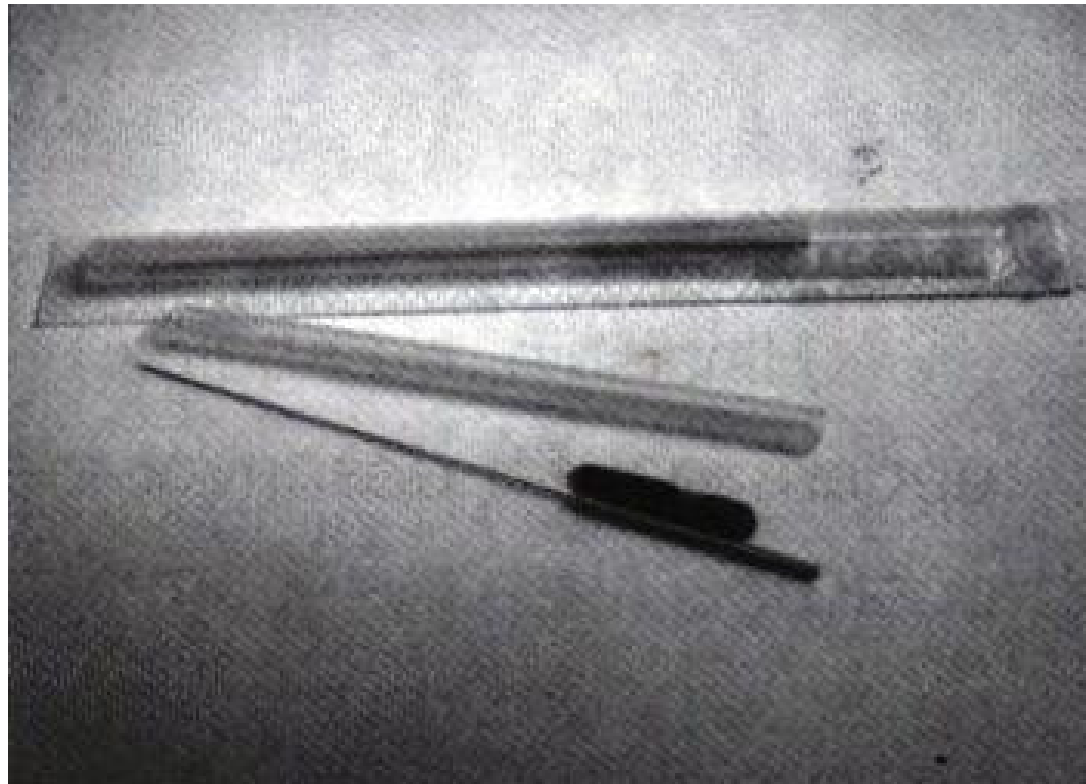
# Pontos Wu SHU



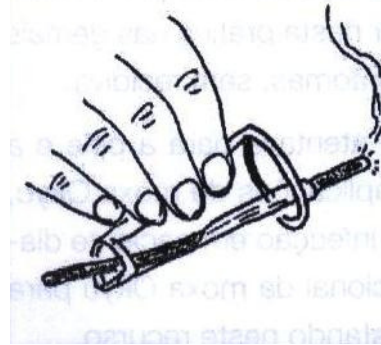
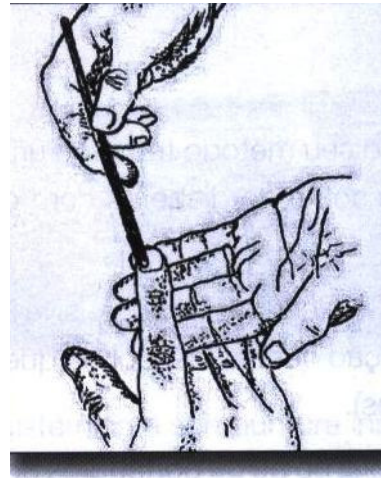
# Hinaishin



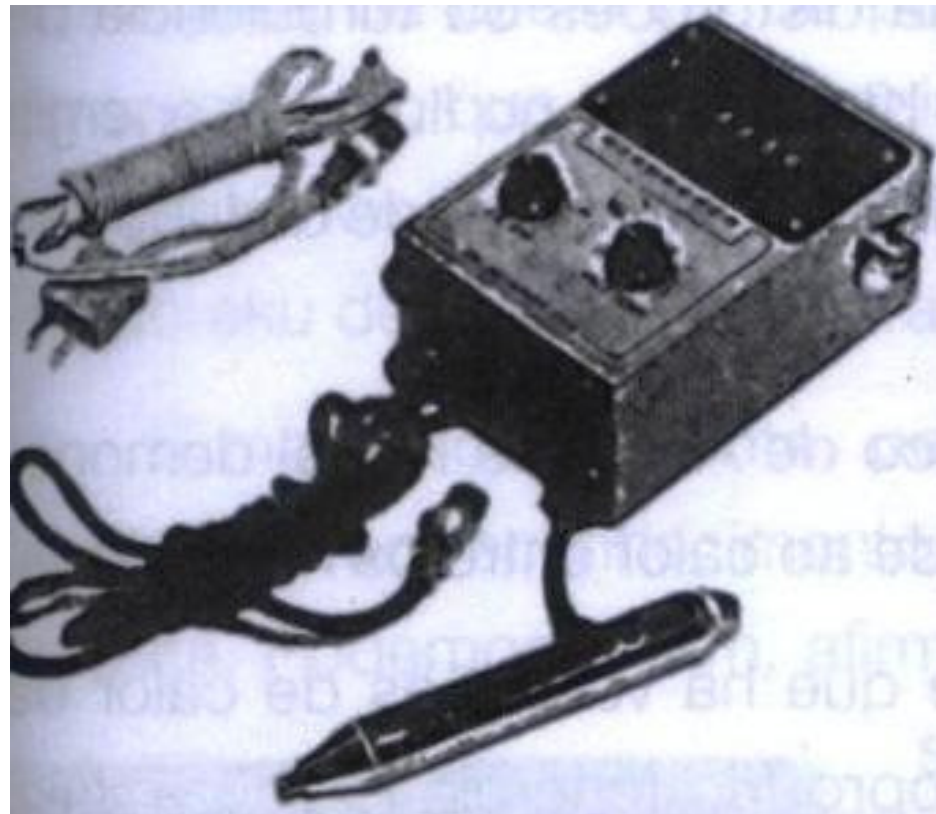
# Agulhas Filiformes

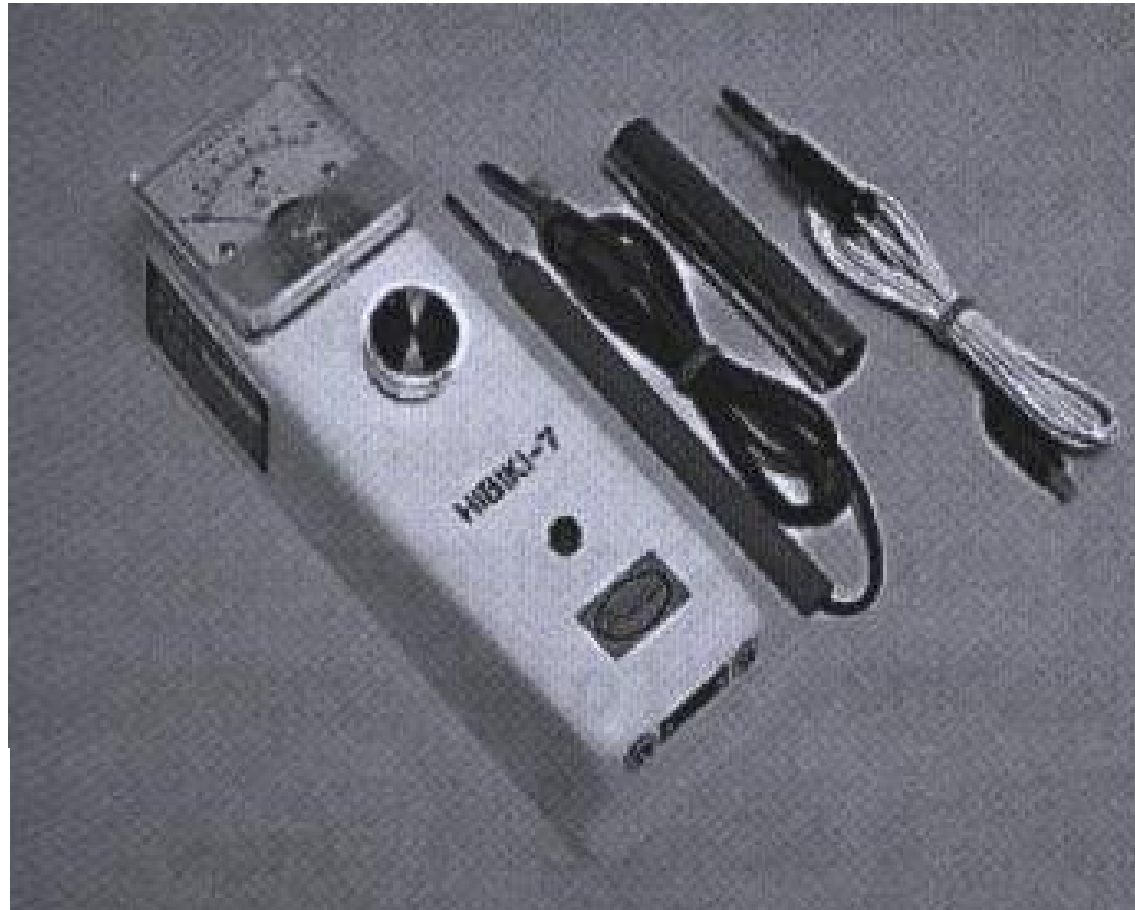


# Método de Sensibilidade ao Calor com Incenso

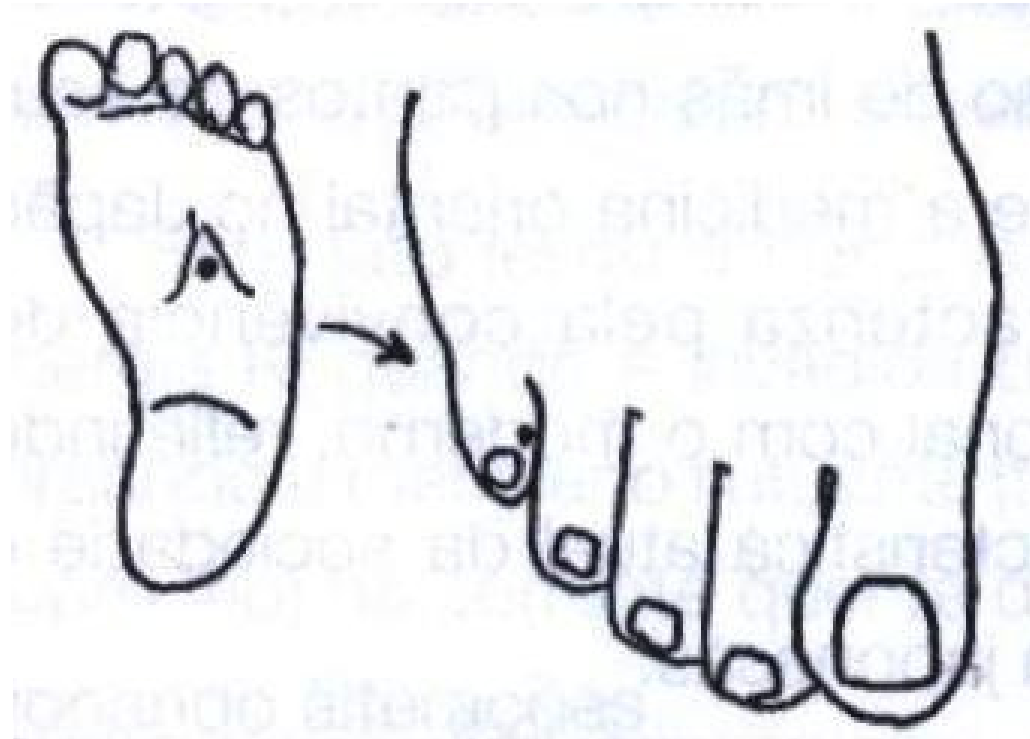


# Mensuração dos Pontos



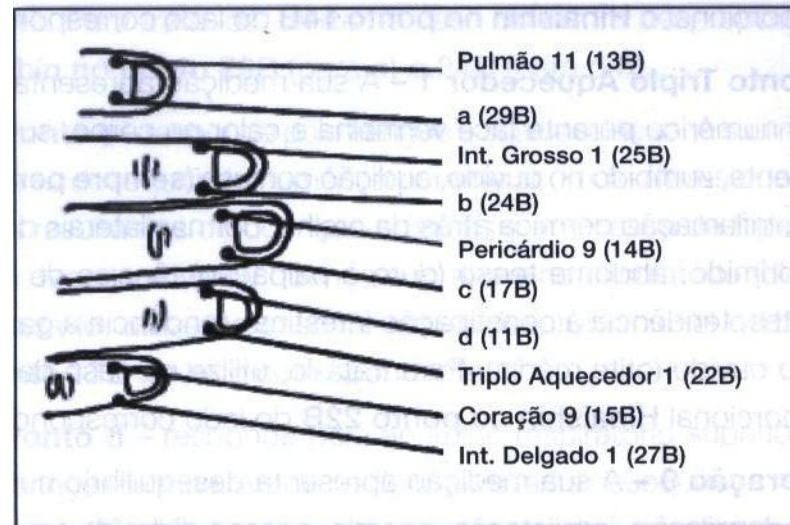


# Os Pontos Tsing



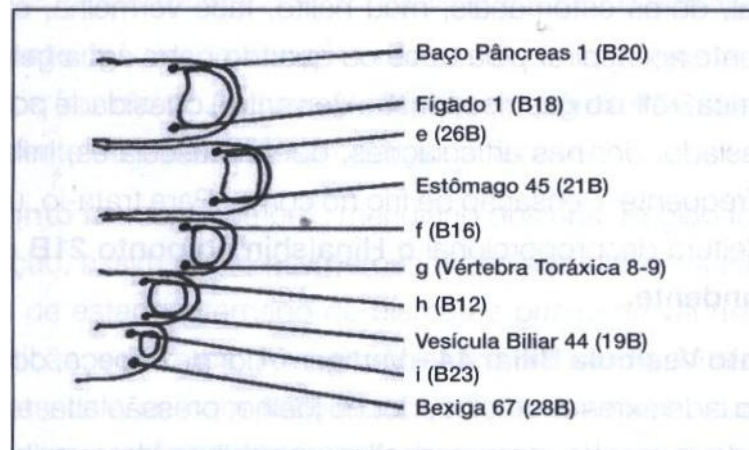
# Dedos das Mãos

dos dedos das mãos utilizados por Akabane



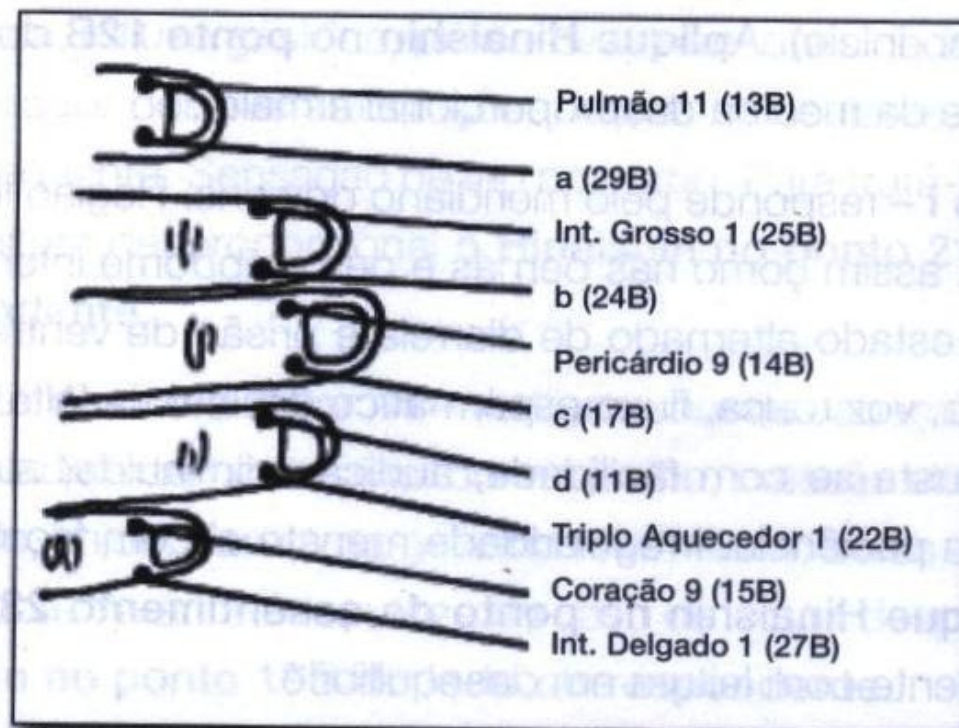
# Dedos dos Pés

Representação dos pontos distais Ting (Seiketsu)  
dos dedos dos pés utilizados por Akabane

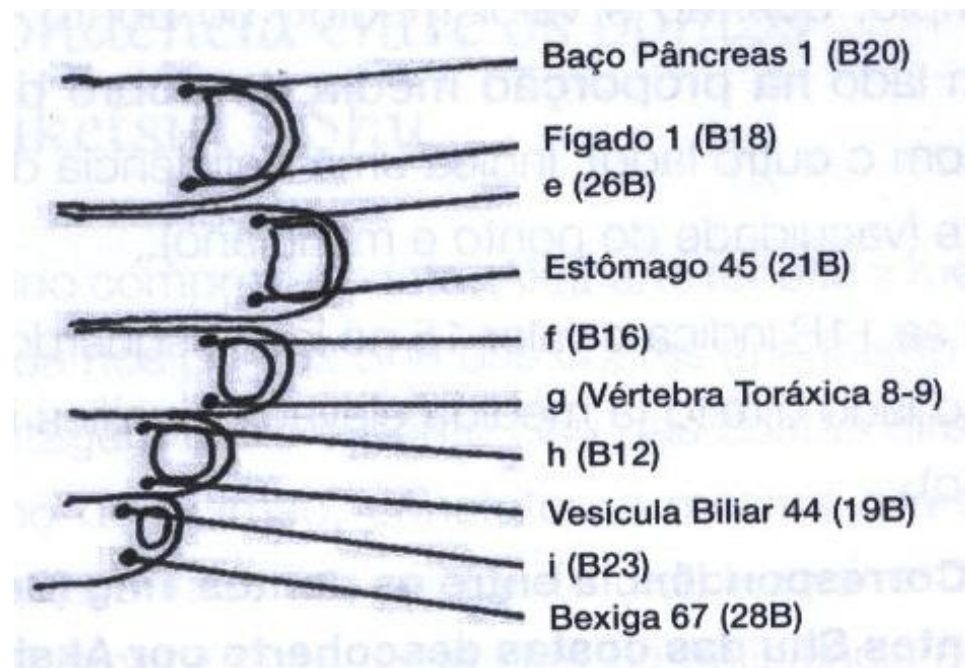


# Relação dos Dedos dos Pés com Bach Shu

## Medindo os Pontos Ting (Akabane Seiketsu)



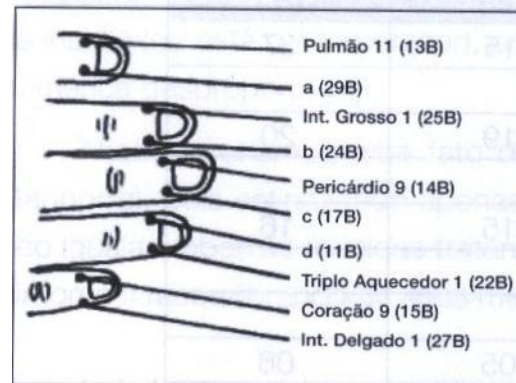
# Relação dos Dedos dos Pés com Bach Shu



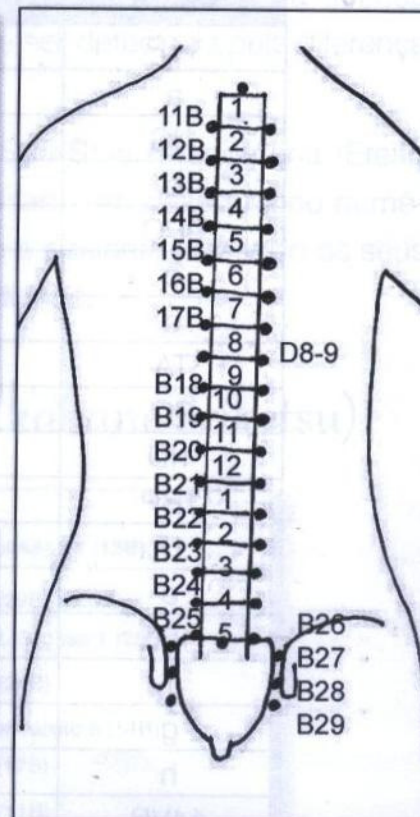
# Relação/Tratamento utilizando os Bach Shu

Tabela de Correspondência entre os pontos Ting (Seiketsu) e os pontos Shu das costas descoberto por Akabane

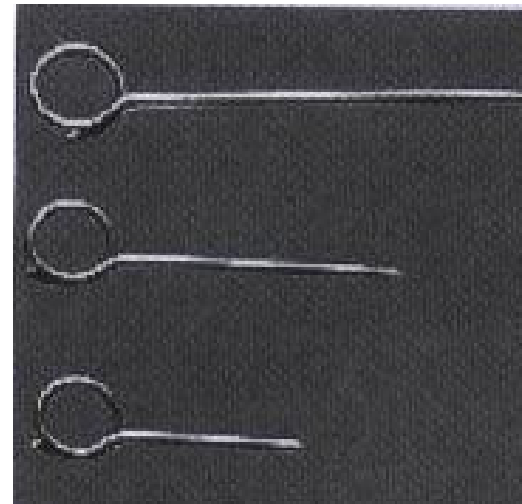
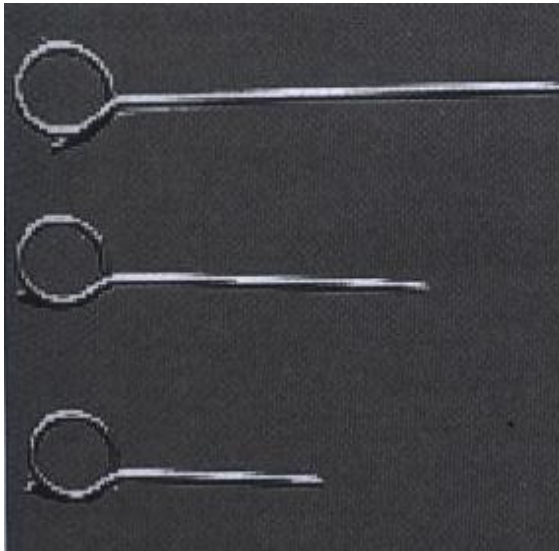
(Pontos das mãos)



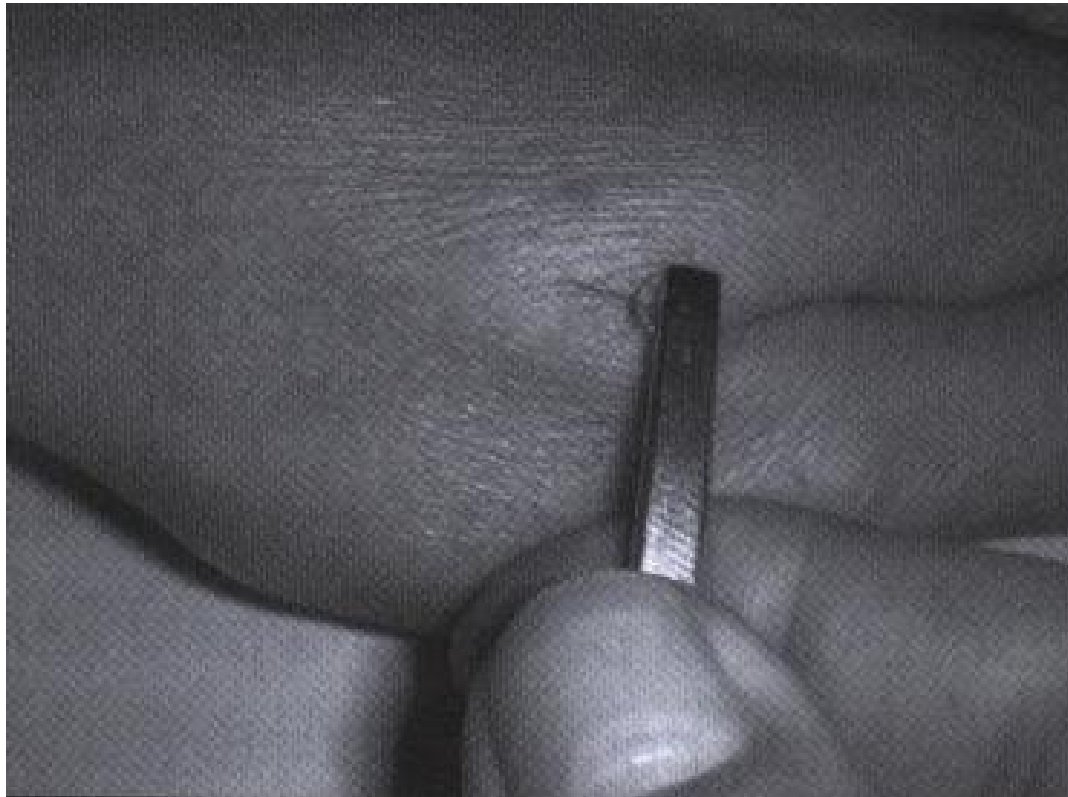
(Pontos dos pés)



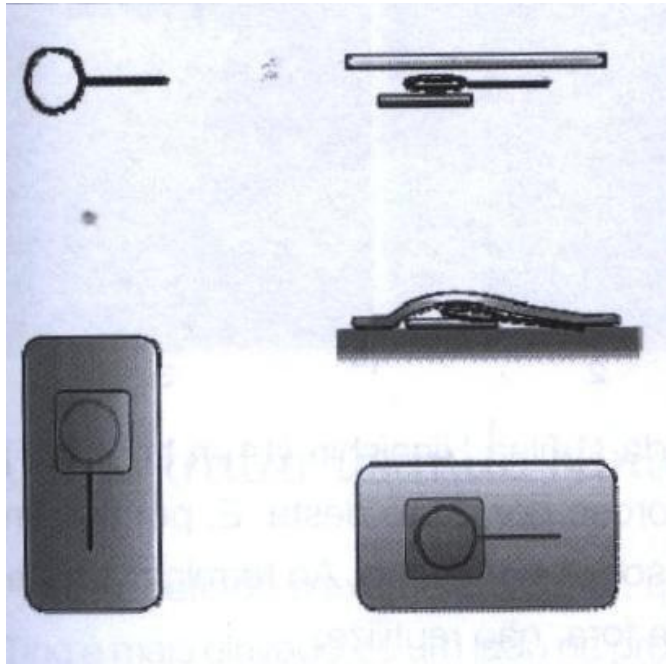
# Agulhas de AKABANE



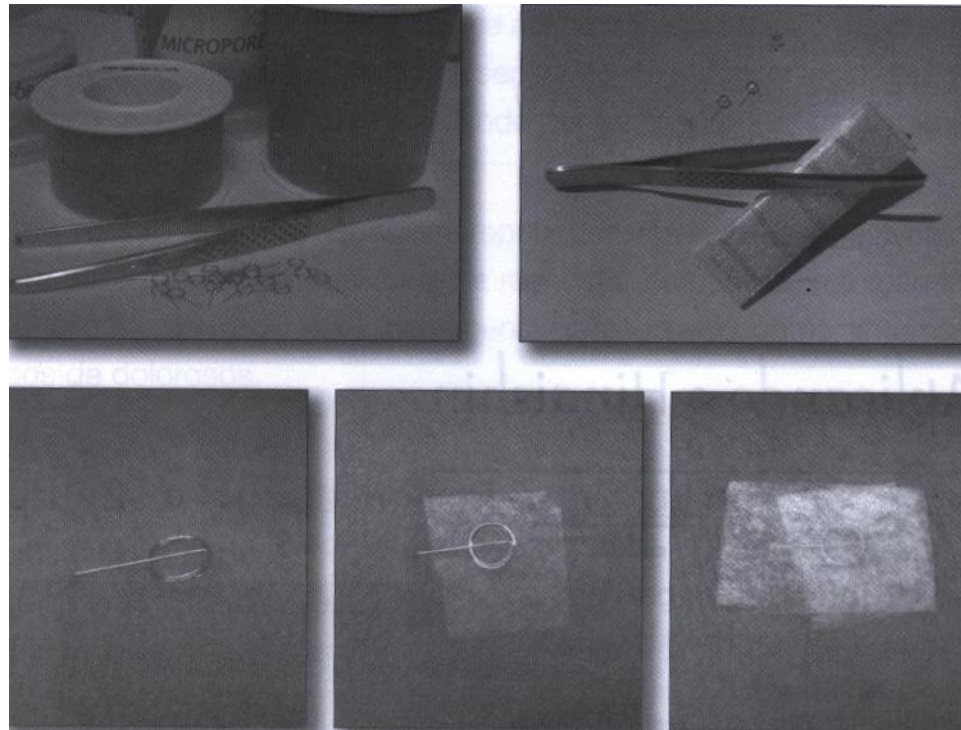
# Método de Aplicação



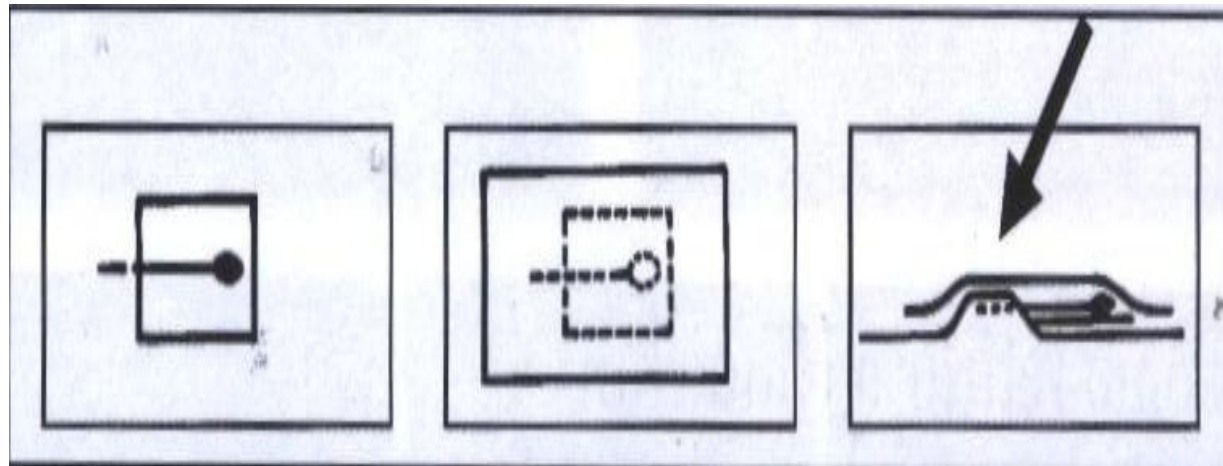
# Método de Inserção e Fixação



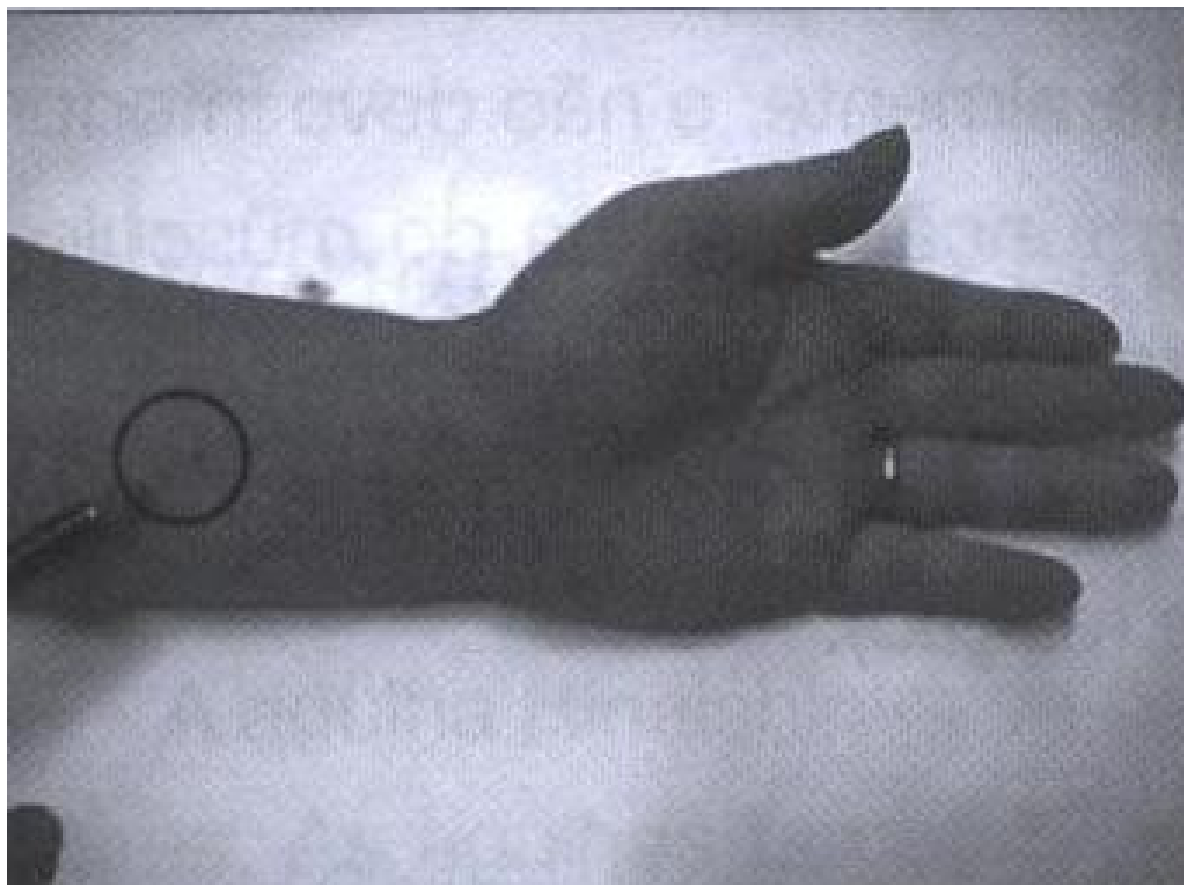
# Fixação da AKABANE



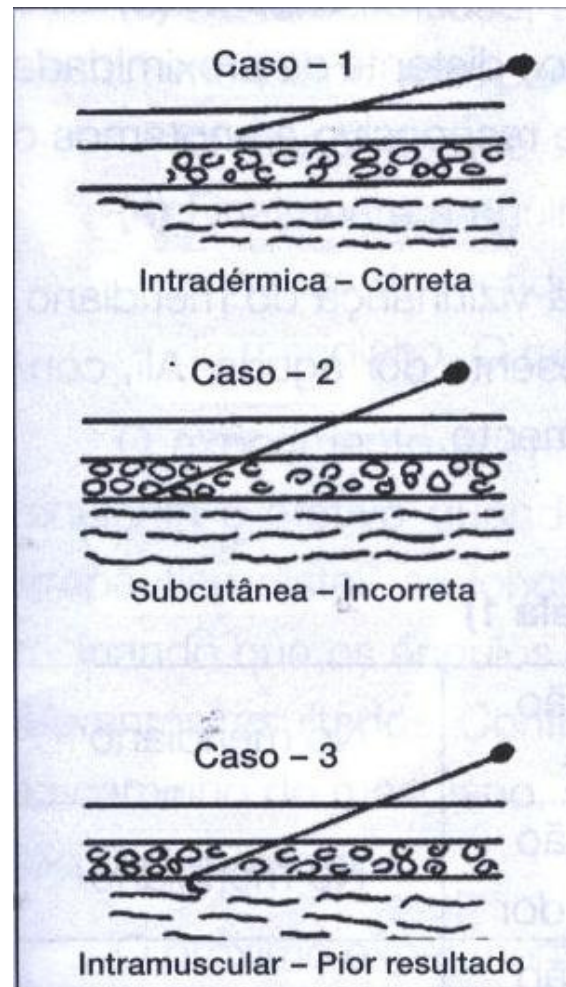
# Esquemáticamente



# Pontos de Meridianos



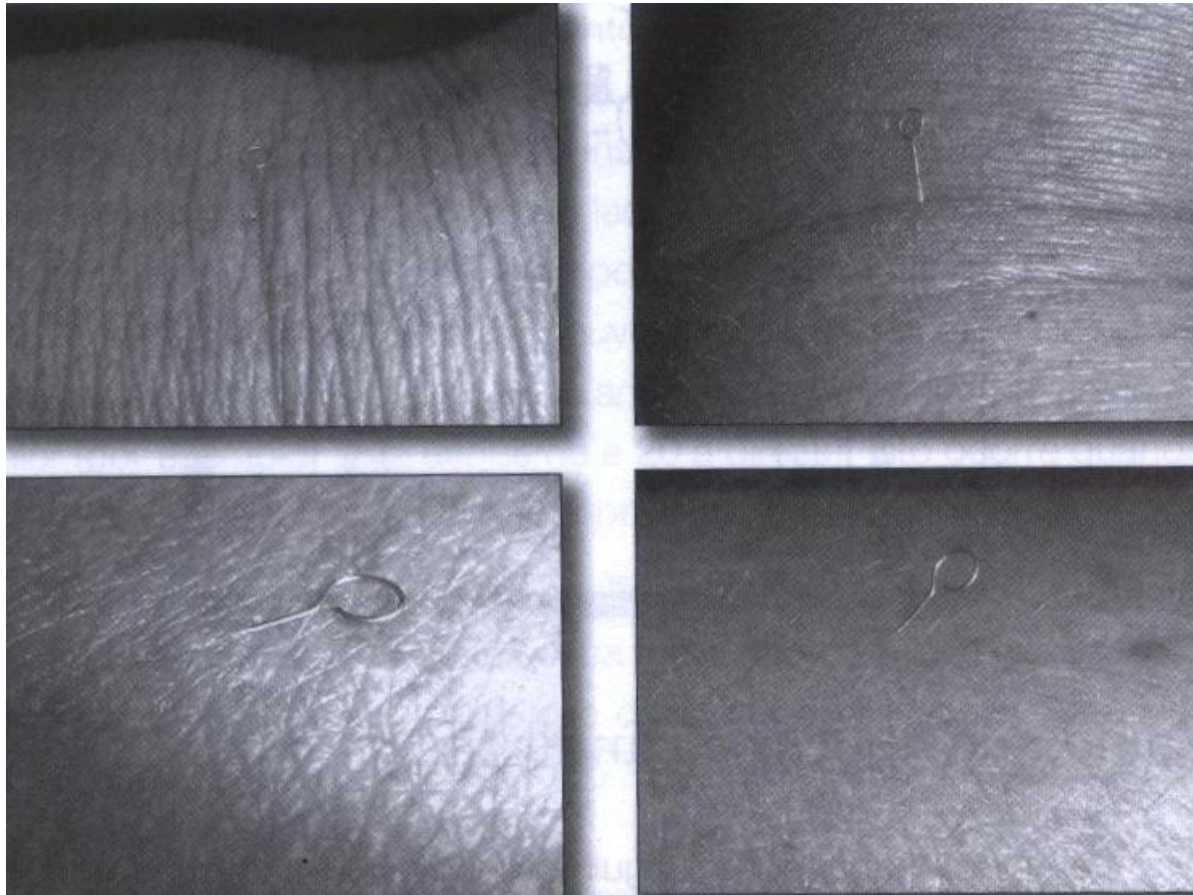
# Técnica Correta



# IG4 - HEGU



# Aplicação da AKABANE



# Sentido da Aplicação

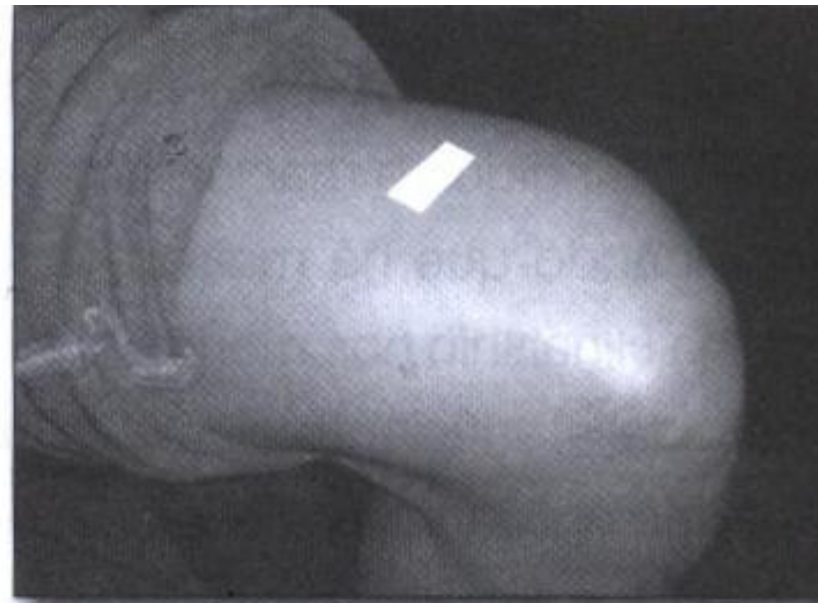
Hinaishin (1)	→	Na direção da dor	No meridiano
Hinaishin (2)	←	Na direção oposta à dor	No meridiano
Hinaishin (3)	↓	Na direção perpendicular	Ao meridiano
Procedimentos (1)(2)(3)	idem	idem	Fora do meridiano afetado

# Pontos Ashi



# Pontos Ashi

## Aplicação e Fixação



# Pontos Ashi e Shu Dorsais

